

# **Making your Toshiba-Samsung Xbox 360 play back-ups and creating your own back-ups**

**Written by: Mksoftware**

This tutorial will explain every step in creating a working DVD-Firmware for your Toshiba-Samsung DVD-Drive and flashing it on the Xbox 360 DVD-Drive. It will also explain how to create successful game back-ups. It is really important to keep in mind that the complete process can be risky if you don't know what you are doing. All the people that want to keep warranty on their xbox and don't want to take the risk of a broken Xbox 360 shouldn't be reading and doing this. The firmware we are talking about is the Xtreme Xbox 360 firmware Modified to Work with KeyDrive Patcher/Xtractor. I am not responsible for any misreading or damage done to your Microsoft Xbox 360 in any way.

**Note: Don't ask me for files. Please do not attempt to try this if your don't understand any of the steps below. Normal to Average PC experience is required in order to successfully complete the installation. In order to get your back-ups running you need the Xtrm0800.bin firmware to get the security sectors of a game and creating working image files.**

## File descriptions

---

**-xtreme\_proper.bin**

*(This is the hacked firmware to use in your Xbox 360 when playing games)*

**-Xtrm0800.bin**

*(This is the firmware you will need to make successful game back-ups)*

**-Security sectors X360.rar**

*(This one is actually quite interesting, it includes several security sectors for a few games: Battlefield 2, Blazing Angels, Call of Duty 2, Halo2, Project Gotham Racing 3, Ridge Racer 6)*

**-Isobuilder.rar**

*(When you got your security key out of a game and you created the \*.iso with the instructions included in this PDF, you can successfully start creating the final image of the game)*

**-mtkflash183c.rar**

*(This is the original MTKFlash, it will work on most PC's)*

**-MTK-NF4.rar**

*(This is a patched version of MTKFlash, it is designed to work on Nforce4 chipsets)*

## The complete firmware process

---

1. First you need to disassemble your Xbox 360 in order to get the DVD Drive out, how to open your Xbox 360 is explained here:  
<http://www.anandtech.com/systems/showdoc.aspx?i=2610&p=2>  
Take the dvd drive out, but keep the power connecter plugged in your Xbox 360 (So you can power the drive with your Xbox 360. You do NOT need to remove the black heatsink screws.
2. The next step is to make a connection with your PC, this connection is done with SATA. Plug the SATA cable in your PCI add-on card or on the motherboard of your PC.
3. Each Xbox 360 has its own DVD-key, this key makes it impossible to connect your DVD-Drive to another Xbox 360 and let it work. This key is attached to your console and the *Xtreme Xbox 360 firmware Modified to Work with KeyDrive Patcher/Xtractor* also needs this key in order to work. Now, to get this key we need to use a program called mtkflash, this program is included in the original package by Commodore4Eva. To get this application running we need to use a DOS boot CD or DOS Floppy disk. To create a DOS Floppy disk, just right click on the floppy drive and

select format then tick "create an MS-DOS startup disk". DOS files can be found here: <http://www.bootdisk.com/bootdisk.htm>

So, when you booted to dos you can either insert a floppy disk with mtkflash to get mtkflash running or you can put it on your harddrive and boot it from there.

Now, type the following line in the command prompt: *mtkflash r /m orig.bin*

When you got the application on a:\, you should enter:

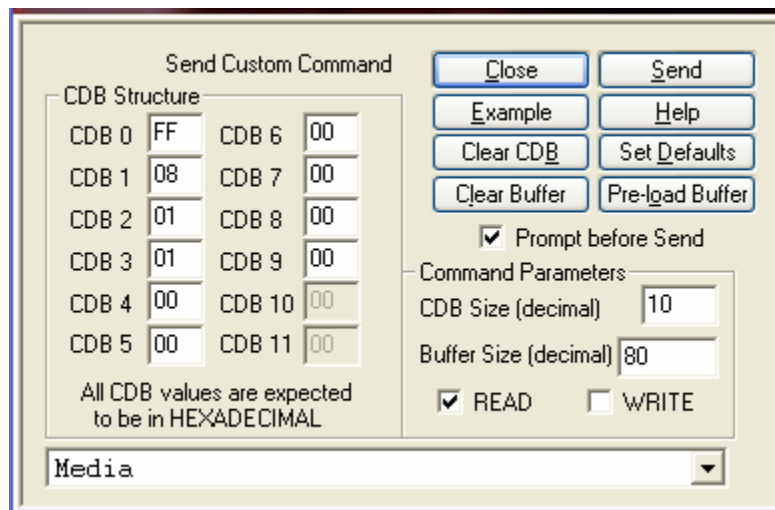
*A:\mtkflash r /m orig.bin*, but when it's on the hard drive (which will be another drive letter) just put that drive letter instead of A:\. (For example: *C:\MTKFlash\mtkflash r /m orig.bin*)

Press enter, and the application should start. Now you can select SEC master or SEC Slave, just select Master. The application should start reading the flash, this will take a while. After it's finished it will tell you to reboot the system. (If you putted mtkflash on the Floppy disk it will put the orig.bin there. If you installed mtkflash in, for example: C:\MTKFlash\ it will put the .bin file there).

4. Now that we have the firmware, we need to extract the DVD-key out of it so we can use it in the modified firmware. This process will be done with KeyDrive Patcher/Xtractor. Open KeyDrive Patcher/Xtractor 1.1 and select the orig.bin file we created with mtkflash. The DVD key will be displayed on your screen. Now select the dvd-key and copy it. Open up the modified firmware for your Samsung dvd-drive (*xtreme\_proper.bin*) paste the dvd key and save it.
5. The last step is writing the firmware to your DVD-Drive. This will be done with mtkflash again. Now, just before you are going to do this, make sure you successfully copied your dvd-key into the hacked firmware. If you installed mtkflash on your floppy disk just put the hacked firmware on the floppy and give the following command:  
*A:\mtkflash w /m xtreme\_proper.bin* and it will start to flash the firmware. If you have mtkflash on your hard drive just put the xtreme\_proper.bin in the directory where you installed mtkflash, this will make the process a little easier. When I installed Mtkflash in: C:\MTKFlash\, I will first specify the command: *C:\MTKFlash\*, then *mtkflash w /m xtreme\_proper.bin* and it will start to flash the drive.
6. if you did everything all right the Xbox 360 will now read all Xtreme backups. When you need raw dumps and security sectors from games it will be needed to flash the *Xtrm0800.bin* on the DVD-Drive, to do this just repeat step 5 but with the *Xtrm0800.bin* firmware file.

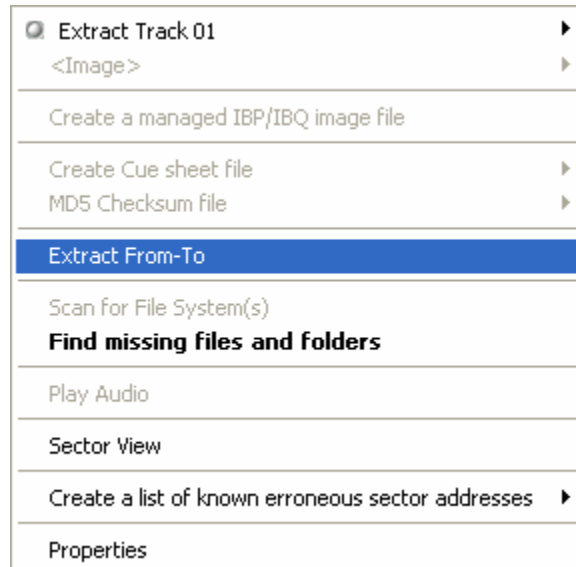
## Making a successful game back-up

1. First you need to flash the *Xtrm0800.bin* on the Toshiba-Samsung DVD-Drive, this needs to be done in mtkflash again. If you installed mtkflash on your floppy disk just put the *Xtrm0800.bin* firmware on the floppy and give the following command:  
*A:\mtkflash w /m Xtrm0800.bin* and it will start to flash the firmware. If you have mtkflash on your hard drive just put the *Xtrm0800.bin* in the directory where you installed mtkflash, this will make the process a little easier. When I installed Mtkflash in: *C:\MTKFlash\*. I will first specify the command: *C:\MTKFlash\*, then *mtkflash w /m Xtrm0800.bin* and it will start to flash the drive. Reboot your system to Windows and proceed with reading.
2. Now, just put in the game you want. Extract *isobuilder.rar* and download *DvdinfoPro* here: <http://www.dvd-recordable.org/wwwimags/media/flash/dvdinfopro/index.htm>
3. Open DVDInfoPro, on the left bottom of the screen select Send Custom Command, there will be a warning displayed on screen, click ok. Now insert the following CDB code you see on the picture below and press Send.

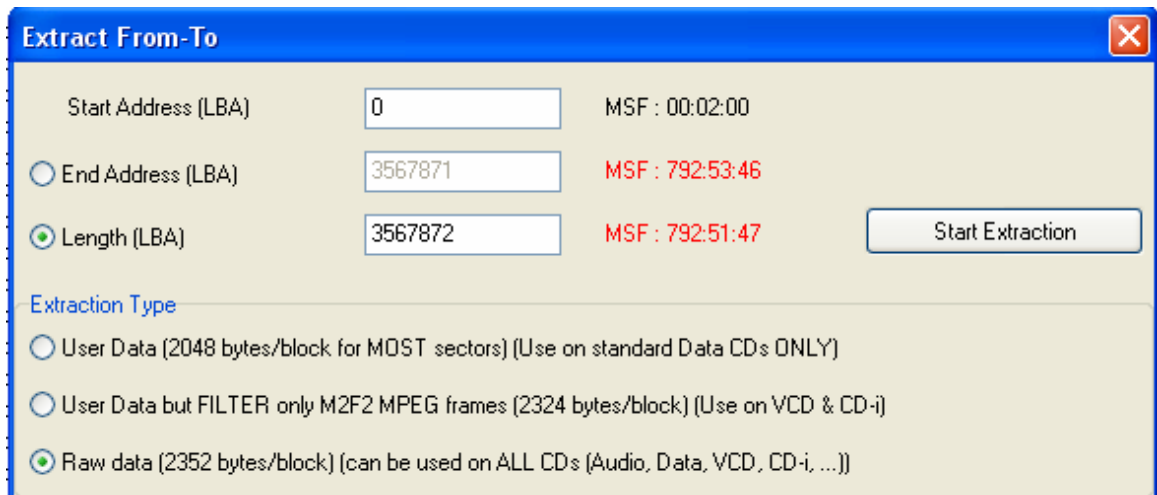


4. The following tool we will need is Isobuster, you can download Isobuster here: <http://www.isobuster.com/isobusterdownload.htm>

5. Open Isobuster, right click on the Toshiba-Samsung DVD-Drive and press Extract From-To just like on the image below



6. Unlike the image below, select User Data (2048 bytes/block for MOST sectors)  
At the Length (LBA) for Xbox 360 games enter 3567872, for Xbox 1 games enter 3431264, when finished press Start Extraction.



7. Save your file as game.iso  
When you receive a read error dialogue box, choose fill with blank zeros for sector and select use this selection for all errors.

8. Copy the game.iso and ss.bin to the Xbox 1 or Xbox 360 isobuilder directory (Depending on Xbox 360 or Xbox 1 game)  
Run build360.bat (Xbox 360 game) or build.bat (xbox 1 game)